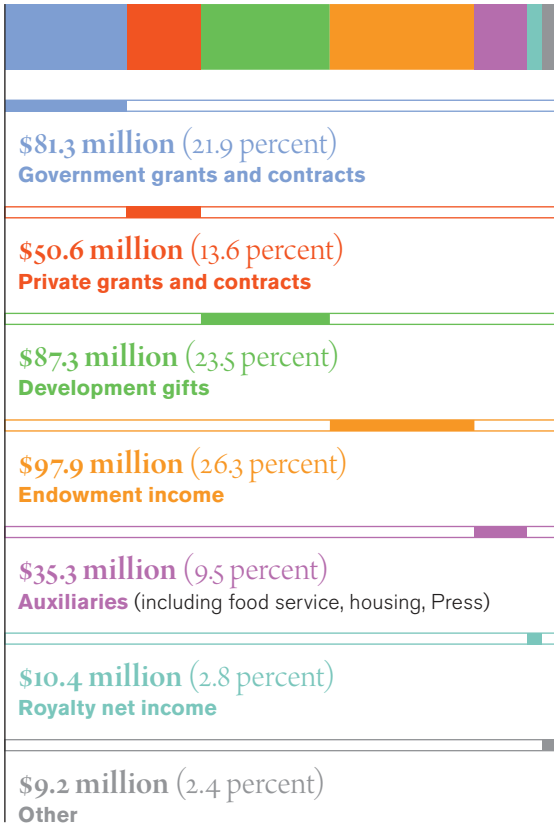


Operating Revenue and Expenditures, Fiscal Year 2016

The university ended fiscal year 2016 with a \$1.3 million surplus, which will be directed to a reserve account dedicated to future capital projects. The surplus is the result of increased government grants and contracts, strong fundraising results, and increased royalty income.

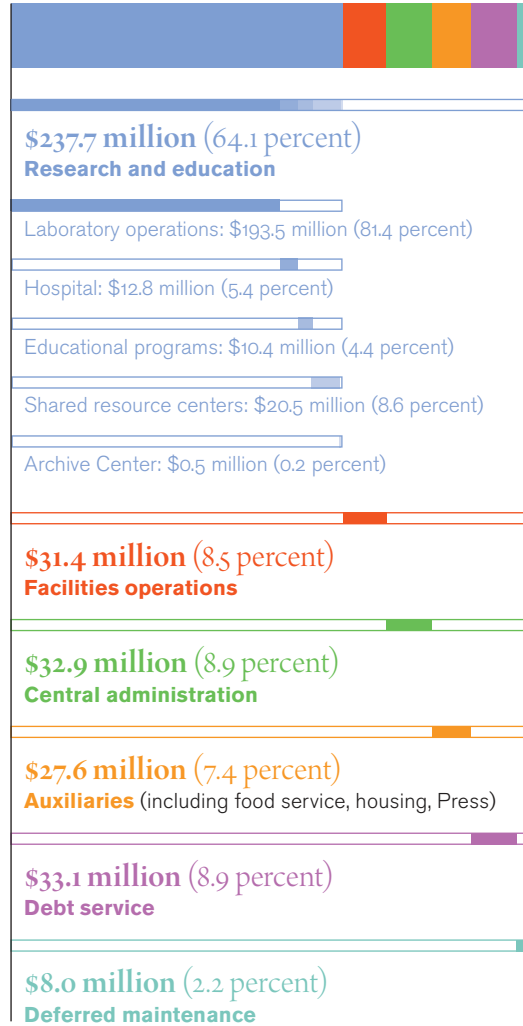
Revenue

\$372 million



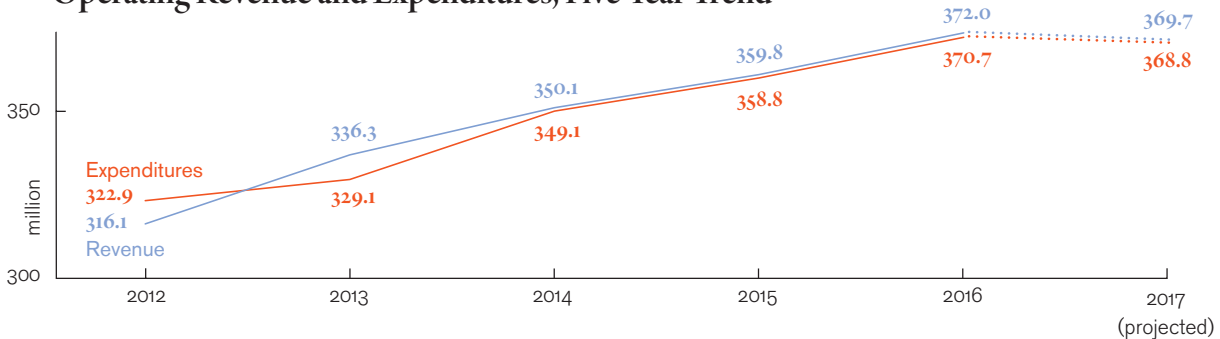
Expenditures

\$370.7 million



Rockefeller is proud of its commitment to fiscal responsibility, as evidenced by its history of balanced budgets. An unusual annual deficit in fiscal year 2012, the result of ongoing turmoil in the financial markets, was covered from funds set aside from previous years' surpluses.

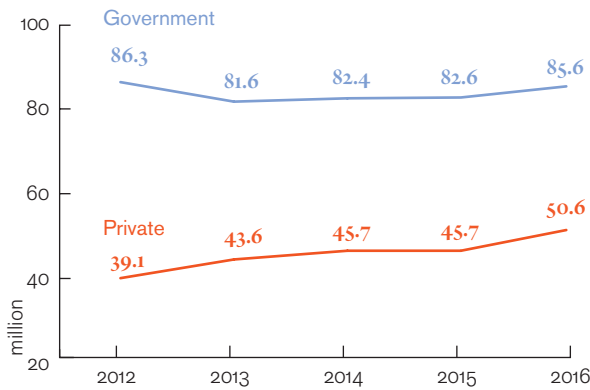
Operating Revenue and Expenditures, Five-Year Trend



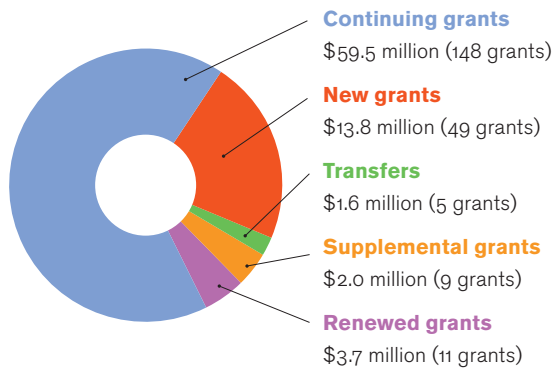
Grants and Gifts

Government and Private Grants, Five-Year Trend

Although government grant revenue has been declining, Rockefeller's faculty remain highly successful in obtaining competitive grants. The university's government grant income is up slightly this year despite being down nationally. Private grants continue their slight upward trend.

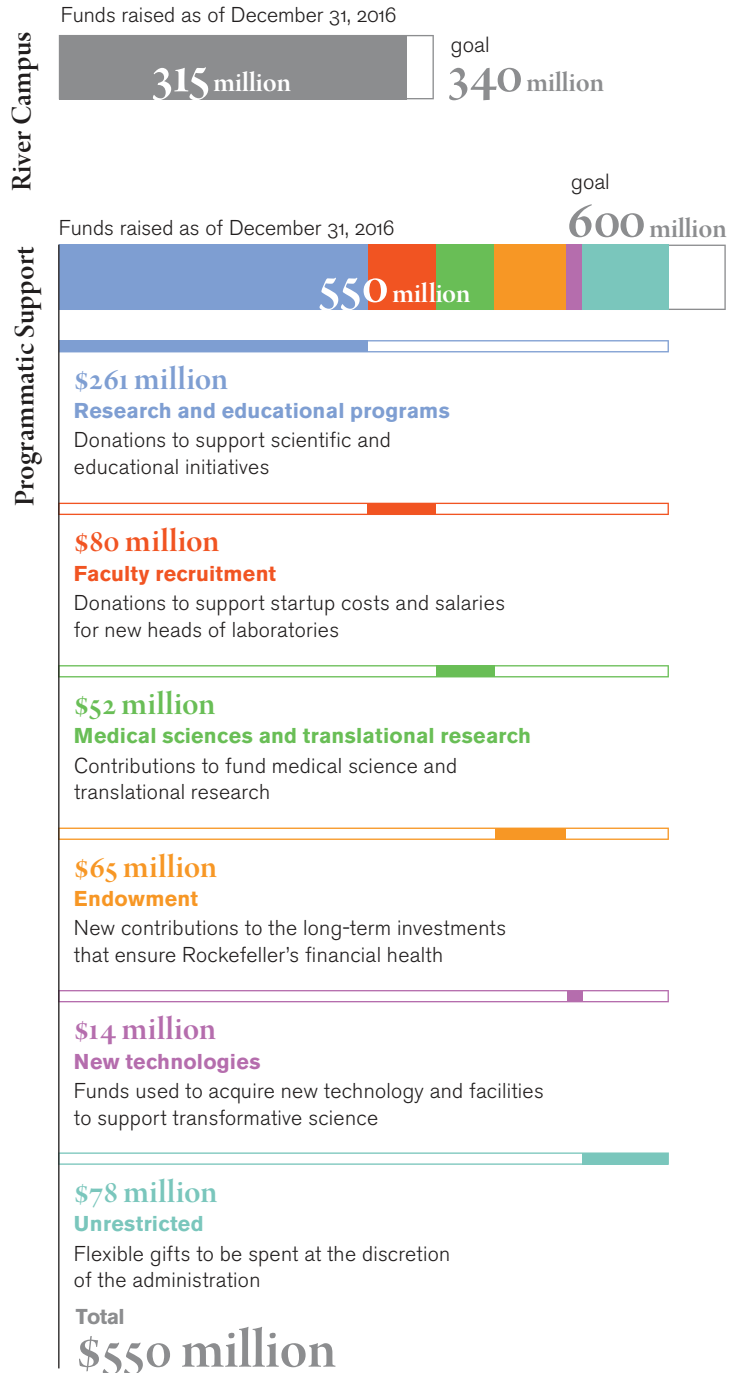


Federal Grants Received in Fiscal Year 2016



Development Gifts, Progress toward Nine-Year Goal

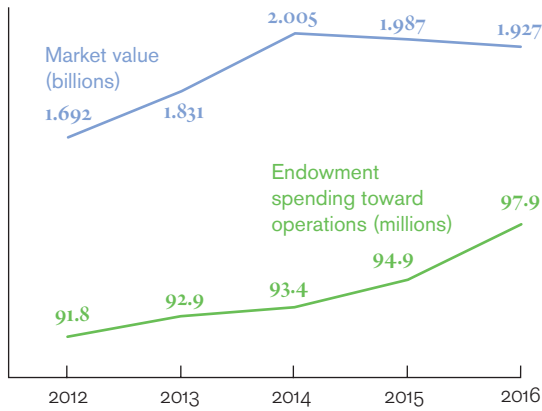
By year six of its nine-year Campaign for Transforming Biomedicine, Rockefeller has raised a total of \$865 million in gifts and pledges. The campaign goal is \$940 million.



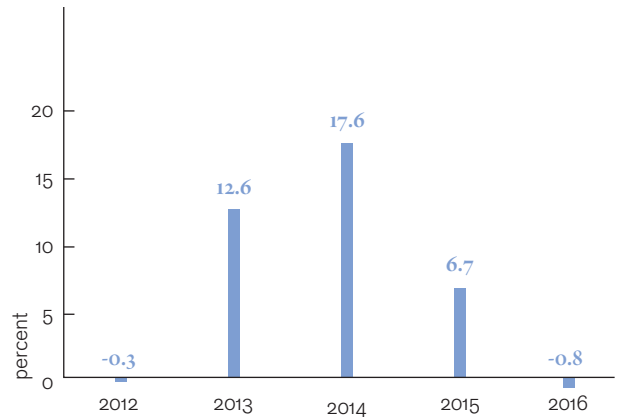
The Endowment

The university's endowment performed in the top quartile in fiscal year 2016, returning -0.8 percent in challenging markets. The formula that determines endowment spending takes into consideration the rate of inflation and the performance of the university's investments over the previous three years, among other factors.

Market Value and Spending, Five-Year Trend



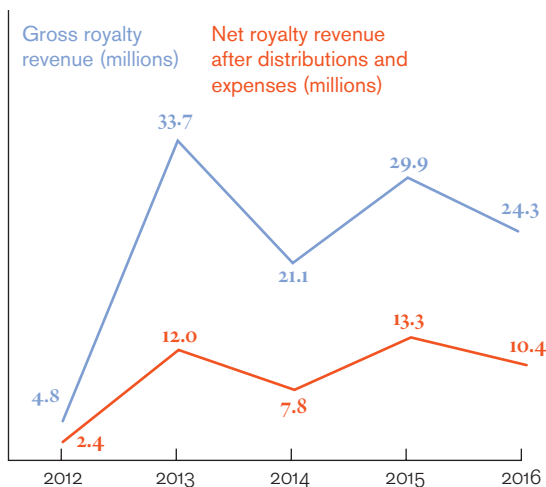
Annual Return, Five-Year Trend



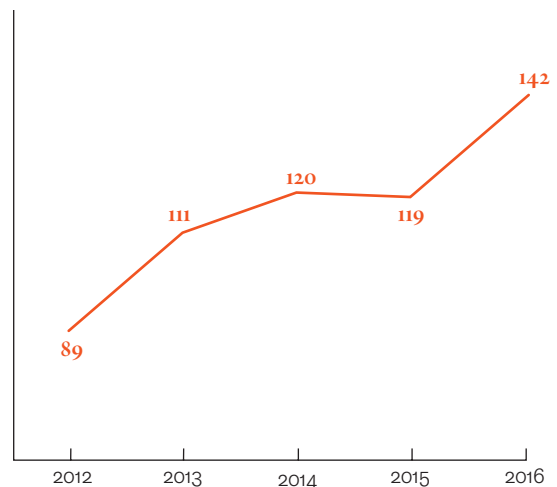
Royalty Income

Licensing agreements, managed by the university's Office of Technology Transfer, are an important source of income. 46 percent of Rockefeller lab heads currently have relationships with industry partners.

Royalty Revenue, Five-Year Trend

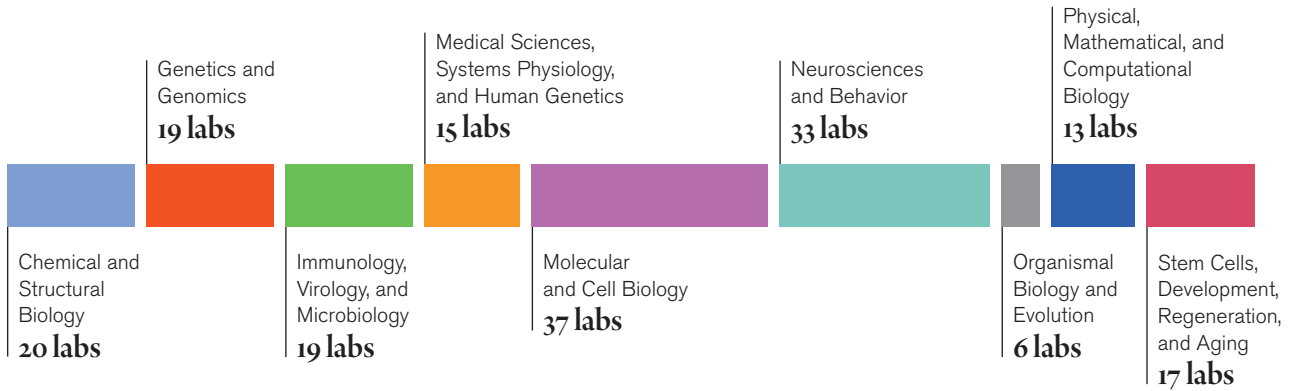


Agreements with Industry, Five-Year Trend



The Rockefeller Community

Areas of Research



Many laboratories conduct research in more than one area.

People



Countries of Origin

Academic positions only



2016 Graduates

Rachel L. Belote, Laboratory of Cellular Biophysics

Daniel Blanco Melo, Laboratory of Retrovirology

Sergio Botero, Laboratory of Cellular Biophysics

Debjani Chakraborty, Laboratory of Genetically Encoded Small Molecules

Roman Corfas, Laboratory of Neurogenetics and Behavior

Josefina del Marmol, Laboratory of Molecular Neurobiology and Biophysics

Lisa Fish, Elizabeth and Vincent Meyer Laboratory of Systems Cancer Biology

Peter C. Fridy, Laboratory of Cellular and Structural Biology

Stefanie Gerstberger, Laboratory of RNA Molecular Biology

Alexander Gitlin, Laboratory of Molecular Immunology

Nicholas David Gulati, Laboratory of Investigative Dermatology

Zhanna Hakhverdyan, Laboratory of Cellular and Structural Biology

Joshua A. Horwitz, Laboratory of Molecular Immunology

Hala Iqbal, Laboratory of Genetically Encoded Small Molecules

Wenyan Jiang, Laboratory of Bacteriology

Xin Jin, Lulu and Anthony Wang Laboratory of Neural Circuits and Behavior

Corynn Kasap, Selma and Lawrence Ruben Laboratory of Chemistry and Cell Biology

Maxime Jérémie Kinet, Laboratory of Developmental Genetics

Jia Min Loo, Elizabeth and Vincent Meyer Laboratory of Systems Cancer Biology

Yi-Hsueh Lu, Laboratory of Molecular Genetics

Monica Mugnier, Laboratory of Lymphocyte Biology

Hirofumi Nakayama, Laboratory of Molecular Biology

Alexander H. Nguyen, Elizabeth and Vincent Meyer Laboratory of Systems Cancer Biology

Ryan Quin Notti, Laboratory of Structural Microbiology

Andrej Ondračka, Laboratory of Cell Cycle Genetics

Jason Pitts, Laboratory of Brain Development and Repair

Benjamin Sabari, Laboratory of Chromatin Biology and Epigenetics

Caitlin Sengelaub, Elizabeth and Vincent Meyer Laboratory of Systems Cancer Biology

Constantin Nicolae Takacs, Laboratory of Cellular Biophysics and Laboratory of Virology and Infectious Disease

Boyuan Wang, Laboratory of Synthetic Protein Chemistry

Xiaoqiu Yuan, Laboratory of Chemical Biology and Microbial Pathogenesis